

PSR-ESW-AI

Frequency Modulated Continuous Wave (FMCW) radar, capable of detecting the presence of a human in a volume the presence of a human being up to 150 m integrating Artificial Intelligence (AI) capabilities

- All weather detection (day/night, rain, fog, snow...)
- Detection in a volume (corridor, hallway...)
- Tracking
- Easy to connect
- Compact: space-saving
- Option for standalone installation



PERFORMANCES

PEDESTRIANS DETECTION RANGE	150 m max.
COVER	Height = 3 m Width = 6 m
SPEED DETECTED LANDFOR AN RESA* = 1 M²	0,05 to 5 m / s
DETECTION SECTOR	7 m
REFRESH	4 Hz (250 ms)
AI CAPABILITY	yes

OPERATIONAL FEATURES

FRÉQUENCY

Bande K - 24 GHz

WAVEFORM

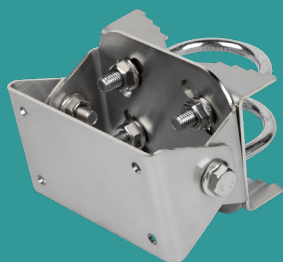
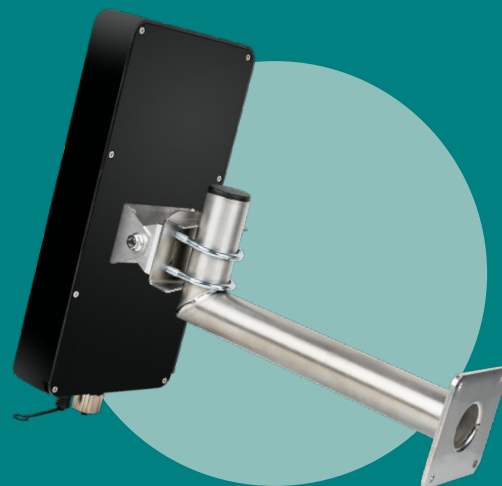
FMCW

RADIATED POWER

100 mW

**APPLICATION FOR AUTHORI-
SATION TO BROADCAST**

No



Hanging mechanism
122-0101-001



Câbles :
122-1119-001

122-1122-001

TECHNICAL FEATURES

DIMENSIONS (L X H X P)

375 x 185 x 60 mm

WEIGHT

3 kg

DATA PROCESSING UNIT

Integrated

CONNECTION INTERFACE

POE RJ45 IP67
Binder 57 20 dry contacts x 5
(relay max 2 A, 48 V DC)

POWER SUPPLY

POE (802.3 af)
POE + (802.3 at)

CONSUMPTION

15 Wh

**OPERATING
TEMPERATURE**
- 20 / + 60 °C

IK AND IP INDEX
IK08 – IP67

CE MARKING
Yes

Interfaces with Sentinis,
software suite and Nomad solutions
https and 802.1x compatible

*RESA: Radar Equivalent Surface Area

EPSI © ITNI S.A.S. All rights reserved. Exclusive and confidential ITNI.
Reproduction in whole or in part is prohibited without prior written consent.



+33 5 54 72 00 10
CONTACT@EPSI.ITNI.FR

160 RUE DE LA SUR
31700 BEAUZELLE

SIRET 505 346 312 00075
EPSI-RADARS.FR

