

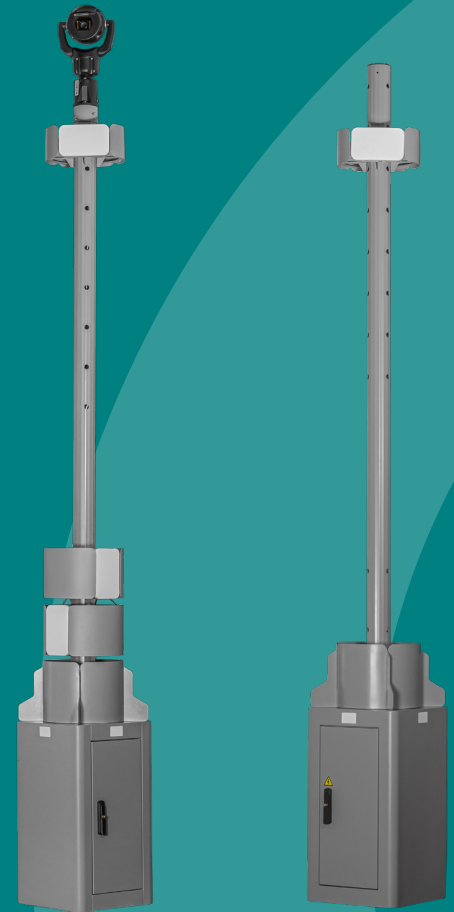
# SENTINIS

- Our all-in-one detection solution for 'plug and play' installation. With our Sentinis, we offer you a complete system incorporating all EPSI technology.

Operational in any weather

Modular

Hosting Capacity



## PERFORMANCE

<b>AUTOPROTECTION</b>	Shock and aperture sensors and proximity radar
<b>COVER</b>	360°
<b>COVERAGE AREA</b>	700 m <sup>2</sup> in its minimum configuration and 110 hectares in its maximum configuration
<b>SPEED DETECTED FOR A 1M<sup>2</sup> RESA</b>	0,02 à 8 m / sec 0 à 18 kts
<b>REFRESH</b>	8 Hz (125 ms)
<b>NUMBER OF SIMULTANEOUS TARGETS</b>	Up to 100

# POSSIBLE CONFIGURATIONS



**SENTINIS-F**  
Technical block,  
self-protection  
and mast



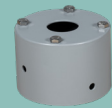
**SENTINIS-W**  
SENTINIS-F with  
GOW module for  
«over» detection



**SENTINIS-M**  
Technical block,  
self-protection  
for remote use of  
sensors



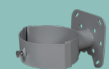
Corridor  
Module



Mounting bracket  
PTZ turret



Offset arm



Standard  
mounting  
bracket

## TECHNICAL SPECIFICATIONS

**DIMENSIONS (W X H X D)  
ON THE GROUND**

500 X 500 X 900 mm  
Height : 4.5 m (with mat)

**WEIGHT WITHOUT MAST**

75 kg

**INTERFACE CONNECTION**

RJ45 IP67  
or F0 1000 LX mono IP67  
or F01000 SX mono IP67

**APPLICATION FOR AUTHORI-  
SATION TO BROADCAST**

No

**POWER SUPPLY**

100-240 V AC

**FRÉQUENCY**

Band K - 24 GHz

**WAVEFORM**

FSK

**OPERATING  
TEMPERATURE**  
- 20 / + 50°C

**IK AND IP INDEX**  
IK08 – IP55

**HOSTING CAPACITY**

2 native Corridor  
Modules for 320 m  
span by SENTINIS

1 GOW module

1-2 PSR-SR  
or PSR-ESW

1-2 PSR-X00

1-2 fixed cameras or  
High speaker or strobes

1 turret camera or PTZ

**MAX CONSUMPTION**  
600 Wh

 Interfaces with PSR software suite.  
https and 802.1x compatible

EPSI © ITNI S.A.S. All rights reserved. Exclusive and confidential ITNI.  
Reproduction in whole or in part is prohibited without prior written consent.



+33 5 54 72 00 10  
CONTACT@EPSI.ITNI.FR

160 RUE DE LA SUR  
31700 BEAUZELLE

SIRET 505 346 312 00075  
EPSI-RADARS.FR

