

# PSR-SR

Compact, high-resolution frequency-modulated continuous-wave (FMCW) radar capable of detect and track pedestrians up to 120 m away.

- All-weather detection (day/night, rain, fog, snow...)
- Detection over 2 hectares
- Surface detection
- Tracking
- Easy to connect
- Compact: space-saving
- Stand alone

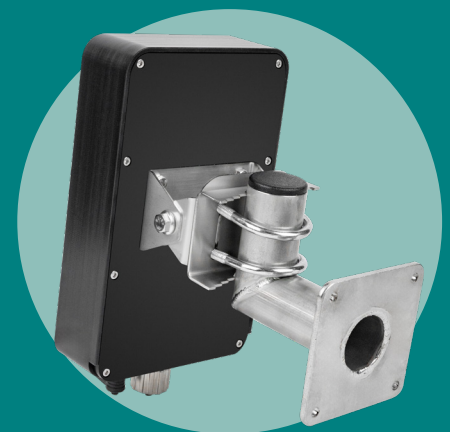


## PERFORMANCES

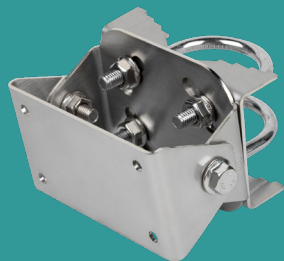
<b>DETECTION RANGE</b>	Pedestrian up to 120 m Vehicle up to 150 m
<b>COVER</b>	110° horizontal 20° vertical
<b>ANGULAR ACCURACY</b>	Pedestrian 2° at 120 m
<b>SPEED DETECTED LAND FOR AN RESA* = 1 M<sup>2</sup></b>	0,1 à 10 m / s 0 à 18 kts
<b>REFRESH</b>	3 Hz (333 ms)
<b>RÉSOLUTION IN DISTANCE</b>	1.20 m
<b>NUMBER OF SIMUL- TANEOUS TARGETS</b>	50

## OPERATIONAL FEATURES

<b>FRÉQUENCY</b>	Band K - 24 GHz
<b>WAVEFORM</b>	FMCW
<b>RADIATED POWER</b>	100 mW
<b>APPLICATION FOR AUTHORIZATION TO BROADCAST</b>	No



## TECHNICAL FEATURES



Hanging mechanism



Cables :  
122-1119-001  
+ 122-1122-001

<b>DIMENSIONS (L X H X P)</b>	160 x 250 x 60 mm
<b>WEIGHT</b>	2,5 kg
<b>DATA PROCESSING UNIT</b>	Integrated
<b>CONNECTION INTERFACE</b>	POE RJ45 IP67 Binder 57 20 dry contacts x 5 (relay max 2 A, 48 V DC)
<b>POWER SUPPLY</b>	POE
<b>CONSUMPTION</b>	12 Wh
<b>OPERATING TEMPERATURE</b>	- 20 / + 60 °C
<b>IK AND IP INDEX</b>	IK08 – IP67
<b>CE MARKING</b>	yes

Interfaces with Sentinis,  
software suite and Nomad solutions  
https and 802.1x compatible

\*RESA: Radar Equivalent Surface Area

EPSI © ITNI S.A.S. All rights reserved. Exclusive and confidential ITNI.  
Reproduction in whole or in part is prohibited without prior written consent.

