

PSR-ESW

Frequency Modulated Continuous Wave (FMCW) radar, capable of detecting the presence of a human in a volume the presence of a human being up to 150 m in all weather conditions.

- All weather detection (day/night, rain, fog, snow...)
- Detection in a volume (corridor, hallway...)
- Tracking
- Easy to connect
- Compact: space-saving
- Stand alone

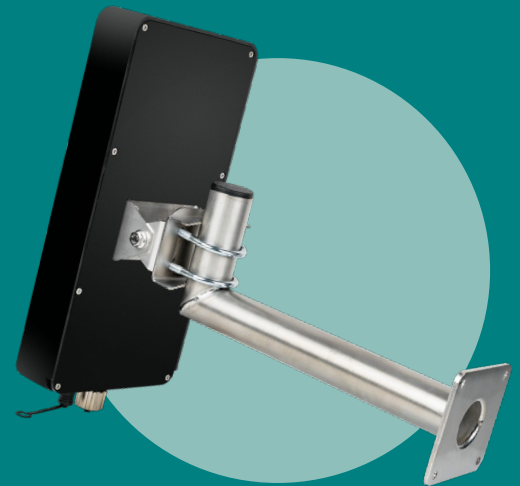


PERFORMANCES

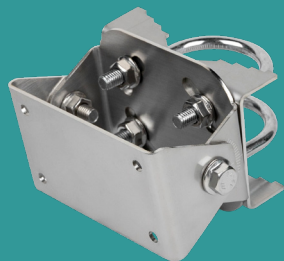
DETECTION RANGE	Pedestrians up to 150 m
COVER	Height = 3 m / Width = 6 m
SPEED DETECTED LAND AND WATER FOR AN RESA* = 1 M²	0,05 à 5 m / s
RESOLUTION IN DISTANCE	7 m
REFRESH	4 Hz (250 ms)

OPERATIONAL FEATURES

FRÉQUENCY	Band K - 24 GHz
WAVEFORM	FMCW
RADIATED POWER	100 mW
APPLICATION FOR AUTHORIZATION TO BROADCAST	No



TECHNICAL FEATURES



Hanging mechanism



Cables :
122-1119-001
+ 122-1122-001

DIMENSIONS (L X H X P)	375 x 185 x 60 mm
WEIGHT	3 kg
DATA PROCESSING UNIT	Integrated
CONNECTION INTERFACE	POE RJ45 IP67 Binder 57 20 dry contacts x 5 (relay max 2 A, 48 V DC)
POWER SUPPLY	POE
CONSUMPTION	15 Wh
OPERATING TEMPERATURE	- 20 / + 60 °C
IK AND IP INDEX	IK08 – IP67
CE MARKING	yes

Interfaces with Sentinis,
software suite and Nomad solutions
https and 802.1x compatible

*RESA: Radar Equivalent Surface Area

EPSI © ITNI S.A.S. All rights reserved. Exclusive and confidential ITNI.
Reproduction in whole or in part is prohibited without prior written consent.

